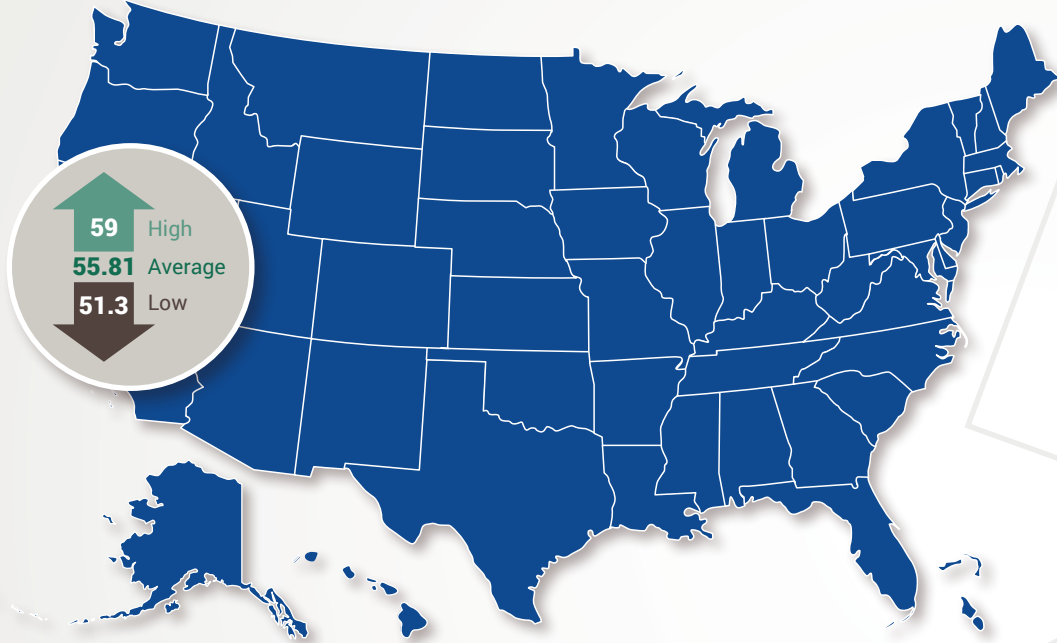
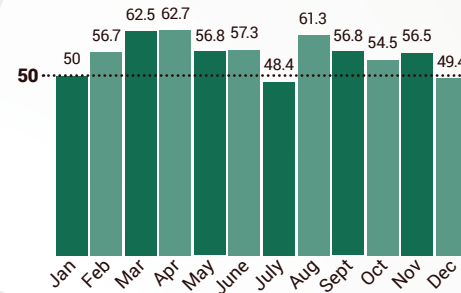


# Manufacturer's Purchasing Manager's Index Report: 2014 Year-In-Review

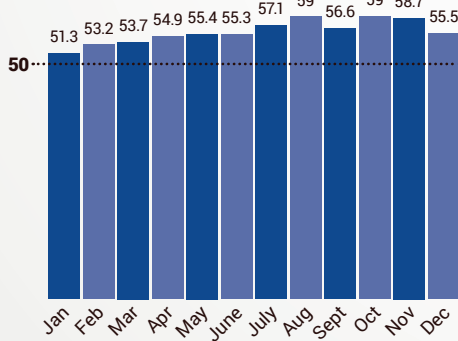


## 2014 Georgia PMI

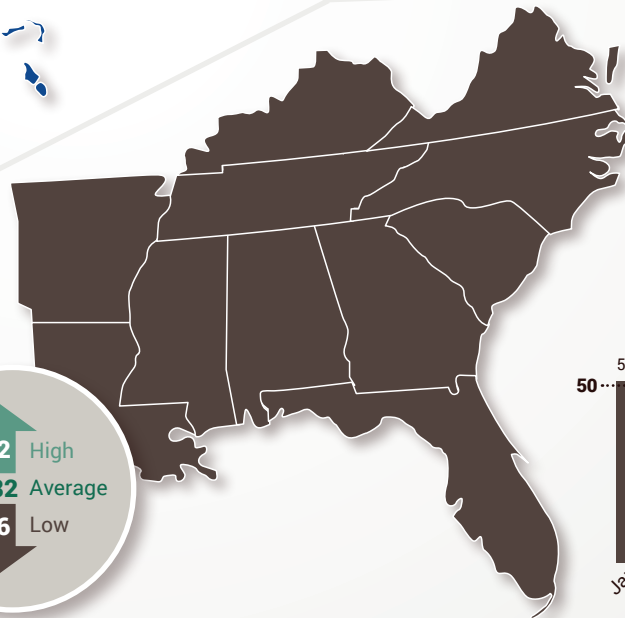


Georgia had the highest average PMI (56.07) compared to the National and Southeast averages over the last 12 months

## 2014 National PMI

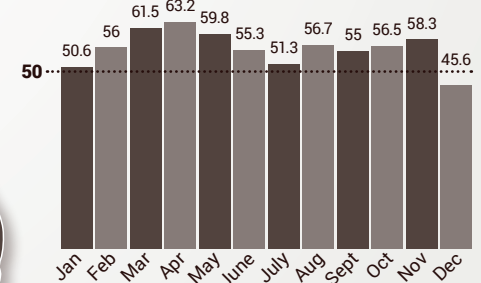


**National PMI indicated expansion in all 12 months**

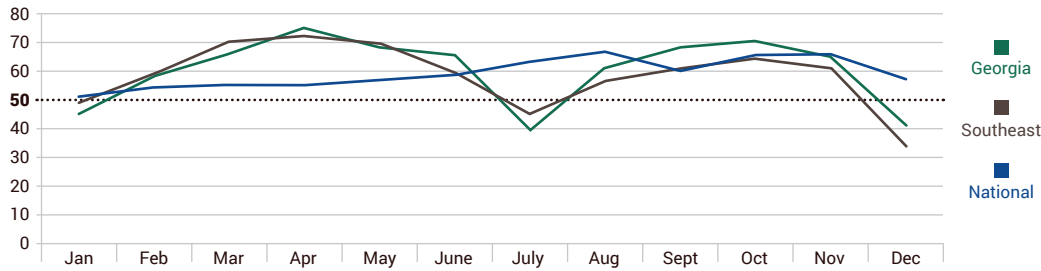


The Southeast ended 2014 with its lowest PMI in December

## 2014 Southeast PMI

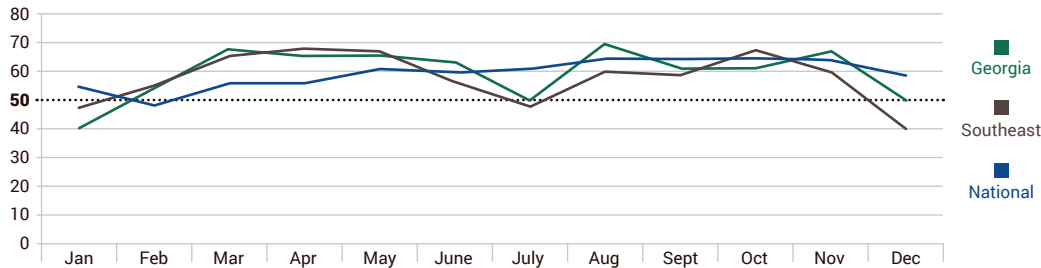


# 2014 Year-In-Review



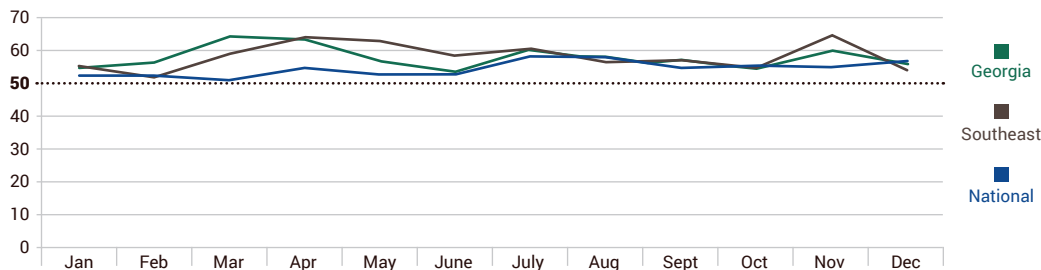
## Headline

Et quae sitae. Daeped esci ento omnihil ipit harcidus re acias ipsam, nisquis sintum essitiscimus unt maximus aut resedig enditat equatenis



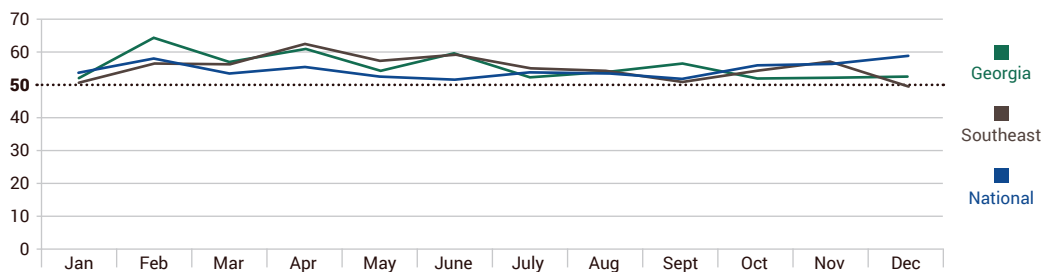
## Headline

Et quae sitae. Daeped esci ento omnihil ipit harcidus re acias ipsam, nisquis sintum essitiscimus unt maximus aut resedig enditat equatenis



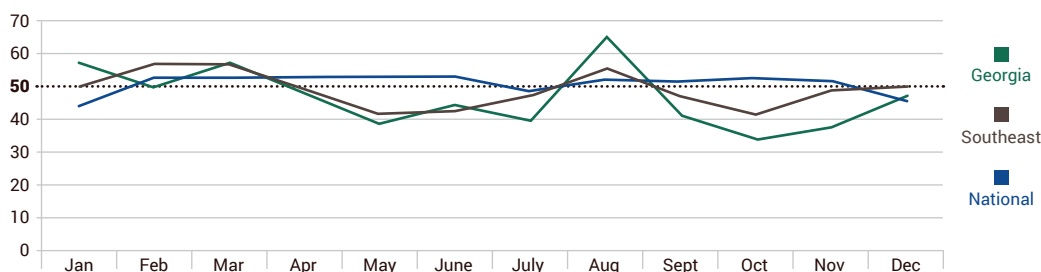
## Headline

Et quae sitae. Daeped esci ento omnihil ipit harcidus re acias ipsam, nisquis sintum essitiscimus unt maximus aut resedig enditat equatenis



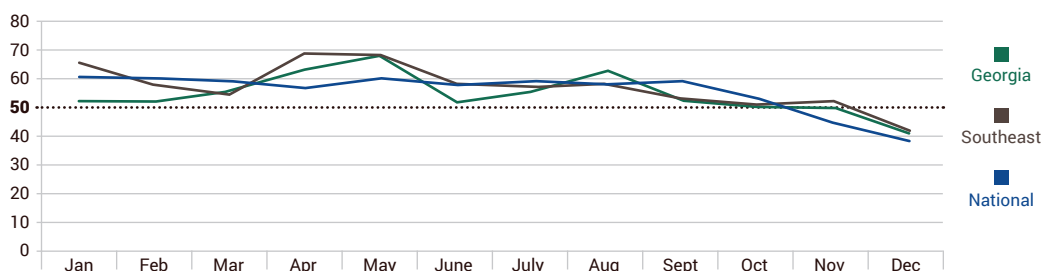
## Headline

Et quae sitae. Daeped esci ento omnihil ipit harcidus re acias ipsam, nisquis sintum essitiscimus unt maximus aut resedig enditat equatenis



## Headline

Et quae sitae. Daeped esci ento omnihil ipit harcidus re acias ipsam, nisquis sintum essitiscimus unt maximus aut resedig enditat equatenis



## Headline

Et quae sitae. Daeped esci ento omnihil ipit harcidus re acias ipsam, nisquis sintum essitiscimus unt maximus aut resedig enditat equatenis